

# gelpole

Range



# gelpole



where is your **gelpole**



# gelpole

## Foot Operated Hand Sanitiser

Portable

Indoor & outdoor installations

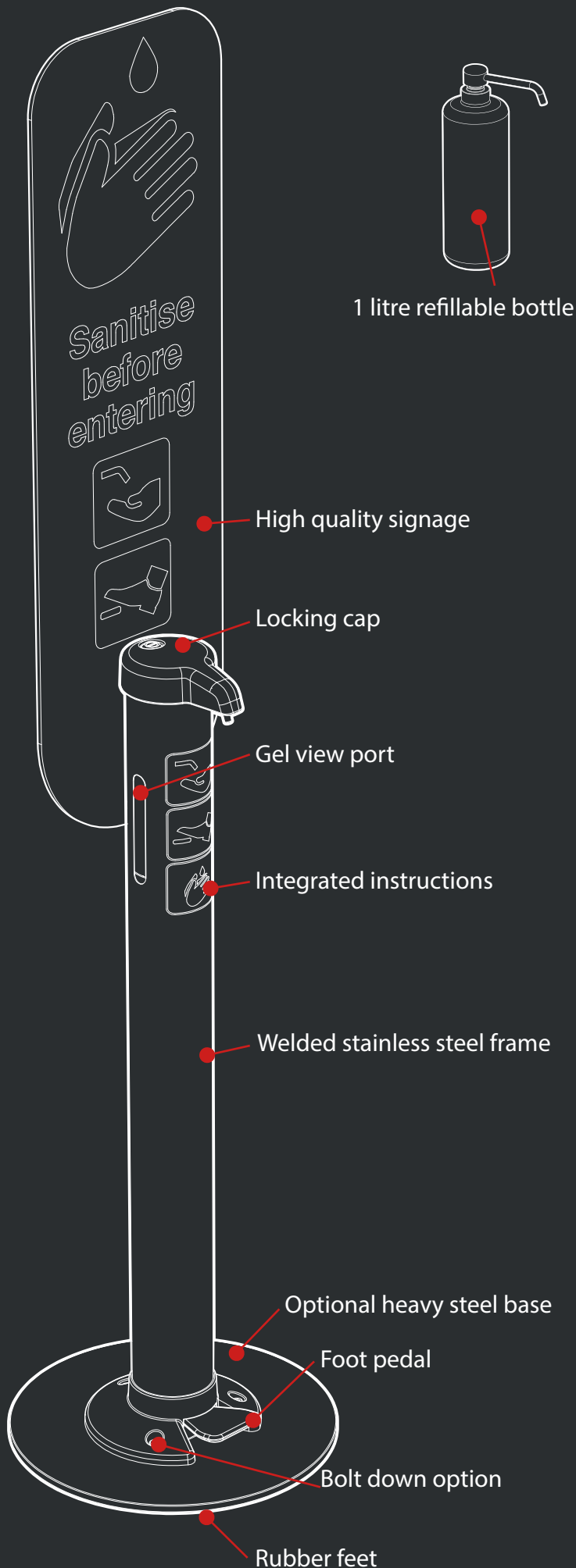
Weather proof

3 Year warranty

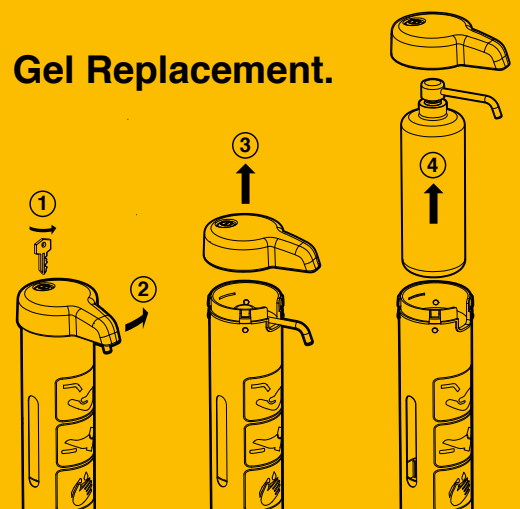
Includes funnel for refilling bottle

New accessories launching soon

More info at [www.gelpole.com](http://www.gelpole.com)



## Gel Replacement.





EGPHB

EGP1L

# gelpole

## Gelpole Entry

**Model No :** EGP1L

**Capacity :** 1 Litre

**Dimensions :** H 1028 W 98 mm

**Weight :** 4.6 kg

**Pump :** 30,000 activations  
(this is a replaceable part)

### Materials :

Cap and base cover: Nylon

Tube : 0.8 mm thick, brushed finish  
201 stainless steel

Frame : 3 mm 201 stainless steel

**Carton :** 1050 x 240 x 240 mm

## Signage

**Weight :** 1.6 kg

**Material :** Styrene (GPPS)

### Dimensions :

Pole with signage. Height : 1.8 m

**Carton :** 1010 x 320 x 75 mm

---

**RRP £ 249**

## Gelpole Entry with Signage + Heavy Base

**Model No :** EGPHB (part number relates to base only)

**Dimensions :** H 6 W 430 mm

**Weight :** 6.8 kg

**Materials :** Steel plate powder coated.

Rubber feet

**Carton :** 450 x 450 x 40 mm

---

**RRP £ 299**



# gelpole

## Gelpole 5 Litre

### Foot operated hand sanitiser

- Portable
- Indoor & outdoor use
- Weather proof
- 3 Year warranty
- New accessories launching soon

5 Litre



Sanitise before entering



High quality signage

Locking cap for pump Replacement



Integrated instructions

Welded stainless steel

Locking Lid

5 litre capacity

Gel Level indicator

Foot pedal

Rubber feet

Heavy steel base





**5 Litre**

# gelpole

## Gelpole 5 Litre

**Model No :** EGP5L

**Capacity :** 5 Litre

**Dimensions :** H 1028 W 430 mm

**Weight :** XX kg

**Pump :** 50,000 activation, this is a replaceable part

### **Materials :**

Cap and base cover: Nylon Plastic

Tube : 0.8 mm thick, brushed finish

201 Stainless steel

Frame : 3 mm 201 stainless steel

**Cartons :** TBC

### **Integrated Heavy Base**

**Dimensions :** H 6 W 430mm

**Weight :** 6.8 kg

**Materials :** Steel plate powder coated. Rubber feet

**Carton :** 450 x 450 x 40mm

### **Signage**

**Weight :** 1.6 kg

**Material :** Styrene (GPPS)

**Dimensions :**

Pole with signage. Height : 1.8m

**Carton :** 1010 x 320 x 75mm

---

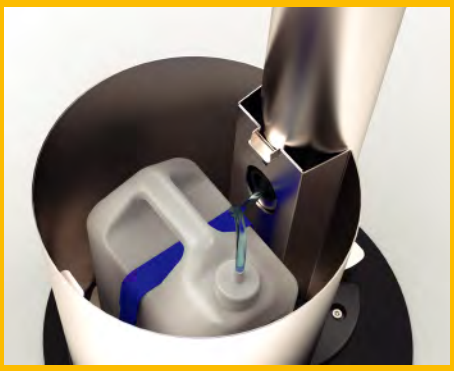
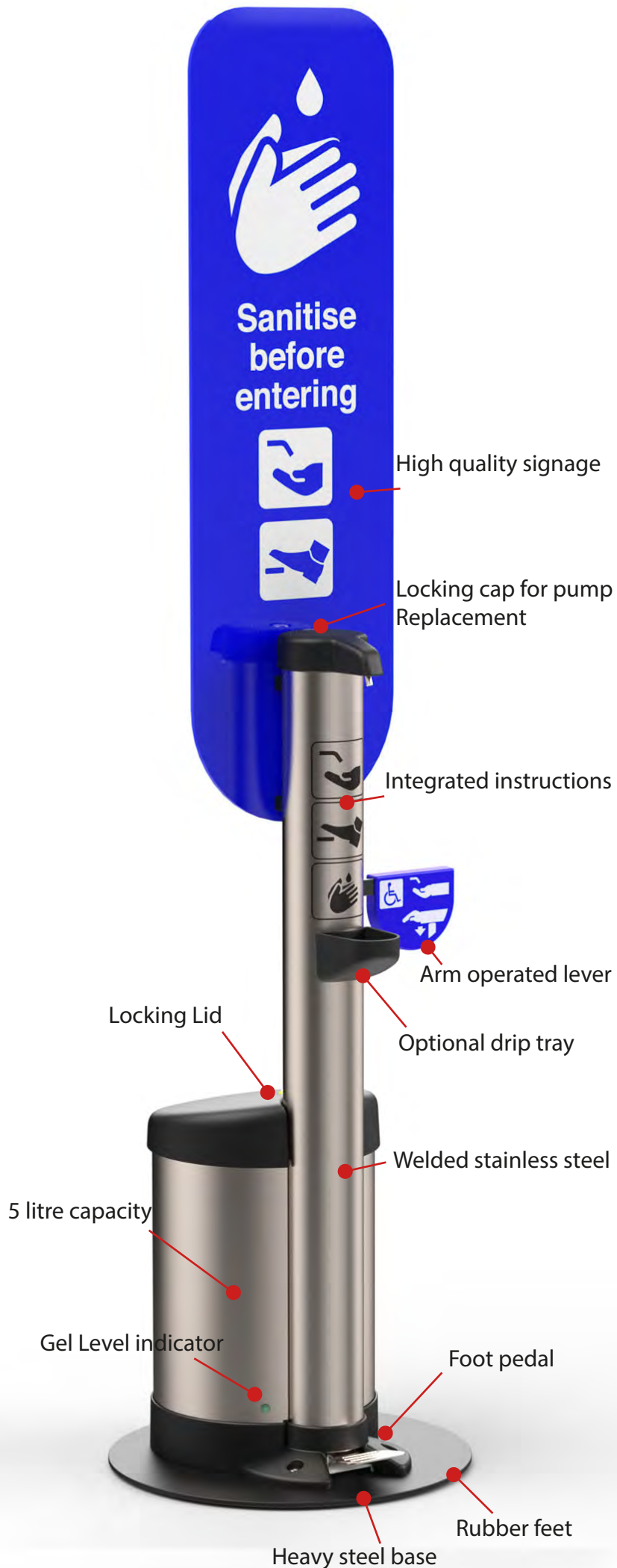
**RRP £ 399**



# gelpole

## Gelpole accessible 5 Litre

- Foot operated hand sanitiser
- Portable
- Indoor & outdoor use
- Weather proof
- 3 Year warranty
- New accessories launching soon
- More info at [www.gelpole.com](http://www.gelpole.com)





# gelpole

## Gelpole accessible 5 Litre

**Model No :** EGPAC5L

**Capacity :** 5 Litre

**Dimensions :** H 1028 W 430 mm

**Weight :** XX kg

**Pump :** 50,000 activation, this is a replaceable part

### **Materials :**

Cap and base cover: Nylon Plastic

Tube : 0.8 mm thick, brushed finish

201 Stainless steel

Frame : 3 mm 201 stainless steel

**Cartons :** TBC

### **Integrated Heavy Base**

**Dimensions :** H 6 W 430mm

**Weight :** 6.8 kg

**Materials :** Steel plate powder coated. Rubber feet

**Carton :** 450 x 450 x 40mm

### **Signage**

**Weight :** 1.6 kg

**Material :** Styrene (GPPS)

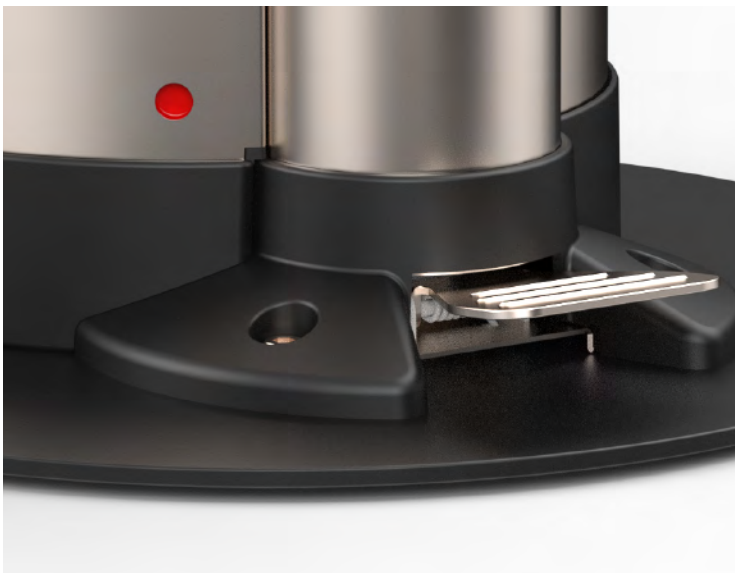
### **Dimensions :**

Pole with signage. Height : 1.8m

**Carton :** 1010 x 320 x 75mm

---

**RRP £ 449**



# gelpole

For schools



# gelpole

Foot operated hand sanitiser

## Children's Gelpole

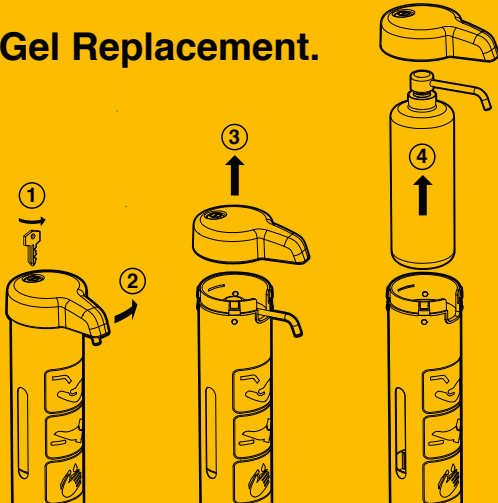
Designed specifically for children with reduced height for ease of operation.

- Portable
- Indoor & outdoor use
- Weather proof
- 3 Year warranty
- New accessories launching soon

More info at [www.gelpole.com](http://www.gelpole.com)



### Gel Replacement.



1 Litre



EGPK8



EGPHB

# gelpole

## Children's Gelpole Entry

Model No : EGPK8

Capacity : 1 Litre

Dimensions : H 775 W 98 mm

Weight : 4.6 kg

Pump : 50,000 activation, this is a replaceable part

Materials :

Cap and base cover: Nylon Plastic

Tube : 0.8 mm thick, brushed finish

201 Stainless steel

Frame : 3 mm 201 stainless steel

Carton : 1050 x 240 x 240 mm

### Signage

Weight : 1.6 kg

Material : Styrene (GPPS)

Dimensions :

Pole with signage.Height : 1.6 m

Carton : 1010 x 320 x 75mm

Childrens Gelpolel Entry

**RRP £ 249**

### Heavy Base

Model No : EGPHB

Dimensions : H 6 W 430mm

Weight : 6.8kg

Materials : Steel plate powder coated.

Rubber feet

Carton : 450 x 450 x 40mm

Childrens Gelpole Entry + Heavy base

**RRP £ 299**